



THE
MAGIC-FLIGHT
LAUNCH BOX

FLIGHT GUIDE



INTRODUCTION

Welcome to the Flight Guide. This book has been designed to lead you through a successful first session, it then builds to a deeper exploration of the theories, physics and science at play in an advanced Launch Box experience. The Guide is intended to encourage creative exploration and will empower you to become an expert with your Magic-Flight Launch Box.

Love is that which enables choice.

QUICK START GUIDE

1. GRIND FINELY AND LOAD TRENCH



Too coarse



Just right

Note: Screen is very fragile. Do not press or pack herbs into trench. Do not load material higher than the side rails.

2. INSERT FULLY CHARGED BATTERY, HOLD UNTIL VAPOR BEGINS TO FORM



Battery must be inserted positive (nipple) end first.

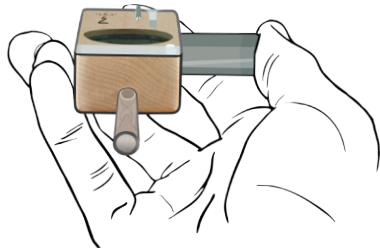


Tip: Look down the draw hole to check for forming vapor.

Note: When battery is engaged, light inside Box will illuminate. Vapor normally begins forming after 3-5 seconds.

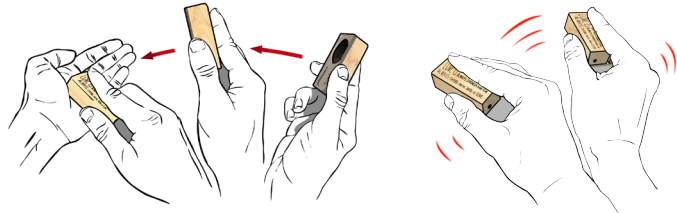
QUICK START GUIDE

3. AFTER VAPOR FORMS, DRAW SLOWLY



Note: Box must be held level, and battery must be engaged throughout draw. INHALE SLOWLY, LIKE SIPPING FROM A CUP OF HOT TEA.

4. RELEASE BATTERY, SHAKE, REPEAT



Note: Shaking helps redistribute the herbs and improves taste. The trench is finished when it is an even brown color. For more in depth usage instructions, see [p.11](#).

TABLE OF CONTENTS

01

GETTING STARTED

- 3. Launch Box Overview
- 4. Preflight Checklist
- 5. Anatomy of the MFLB
- 8. Battery Guidelines

09

DRAW TECHNIQUES

- 11. Preparing Your Trench
- 13. Long Slow Draw Method
- 15. Sipping Method
- 17. Tumbling Your Load
- 18. Finishing Your Trench

19

THEORY & PHYSICS

- 21. Expert Protips
- 22. Draw Rate vs. Temp
- 23. How the Box works
- 25. Odor & Efficiency
- 26. Combustion

27

LAUNCH BOX CARE AND MAINTENANCE

- 29. Basic Cleaning
- 30. In-Depth Cleaning

31

DIAGNOSTICS AND TROUBLESHOOTING

- 33. Common Issues
- 35. Warranty Information

37

RESOURCES, PRODUCTS, AND MORE

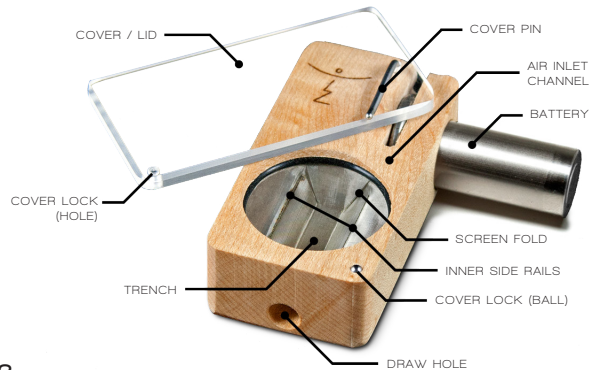
- 39. Additional Products
- 43. About Us
- 45. Online Resources
- 46. Connect with us



PREPARING FOR TAKEOFF

getting started with your launch box

LAUNCH BOX OVERVIEW



3

PREFLIGHT CHECKLIST

- ONLY use bone dry material, moist/wet material can cause buildup.
- DO NOT use resins, solids, or concentrates in the Launch Box.
- DO handle the screen gently, don't press or pack your trench.
- ALWAYS ensure trench is filled up to the inner side rails.
- DO NOT underfill or overfill your trench.
- ALWAYS wait 3-5 seconds for vapor to appear before you begin drawing.
- DON'T use the Launch Box like a pipe, a slow draw works best.
- DO mix your herbs in between draws.
- DO use included brush to gently clean the trench between loads.
- ALWAYS remove and cap the battery when Box is not in use.
- ONLY use the included brush or Q-tips to clean the trench.
- DO NOT use sharp objects to scrape or clean the trench.
- BEWARE dogs enjoy Launch Boxes as chew toys.

4

ANATOMY OF THE MFLB



BOWL/TRENCH

- Screen is very delicate and cannot be replaced.
- Fill gently, do not pack material into trench.
- DO NOT use sharp objects or place pressure on screen.
- Only load center trench, do not fill above level of side rails.
- Discoloration is normal and will occur with use.
- Use the enclosed brush to gently clean the trench between uses.

DRAW HOLE

- Look in draw hole to see vapor forming.
- Use with or without optional stem.
- *Using the Box without a stem is called "Native Mode"*

5

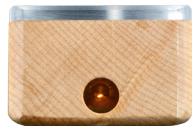


BATTERY HOLE

- Insert positive (nipple) end of battery.
- Always remove and cap the battery when not actively vaporizing.
- At the back of the battery hole there is a small rubber push-back ring that prevents the battery from accidentally engaging. The push-back ring is removable.

LIGHT

- The light is an indicator only. Your Launch Box will continue to function even if it burns out.
- The brightness of the light can be used to determine the charge level of your batteries.
- The light is not covered under warranty.

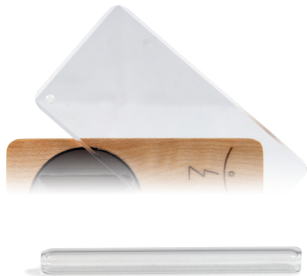


6

ANATOMY OF THE MFLB

LID

- THE LID MUST BE CLOSED FOR EFFECTIVE VAPORIZATION TO OCCUR.
- Each Magic-Flight Launch Box comes equipped with a click lock to keep the cover securely closed during transport.

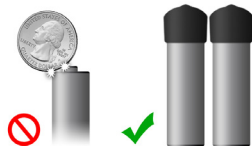


DRAW STEM

- The draw stem is optional.
- Clean glass by soaking in Isopropyl Alcohol.
- The stem will only fit 1/4 inch into the draw hole.
- The stem is made of pyrex glass. ALWAYS HANDLE WITH CARE.

BATTERY GUIDELINES

- Batteries come fully charged and ready to use.
- Keep positive end of batteries covered with provided black caps when not in use.
- Do not use battery if it is too hot to touch; remove from Launch Box and let cool.
- Do not use the peeled batteries with any other devices or appliances.
- Improper storage, prolonged use, or contact with other batteries or metal can lead to overheating and damage to the battery, reducing its life dramatically or completely.
- The Box will only work with NiMH (Nickel Metal Hydride) batteries, 2000 mAh or higher.
- If using 3rd party batteries, the battery wrapper and any adhesive must be removed completely.
- Charge batteries when you go to sleep at night, then remove and cap them in the morning.
- Do not store charged batteries in the charger.



The negative terminal is the outer casing. Batteries can easily short out on metal objects if not covered during transport.



TAKING OFF

advanced draw techniques

PREPARING YOUR TRENCH

Grinding - The Box requires dry material and an extremely fine grind. Properly ground material should pass easily through the mesh of a common window screen. A trick to getting a finer grind is to remove the load after a couple of draws after the material has become thoroughly dry, then re-grind before re-loading. Always remember, keep it fine and dry!



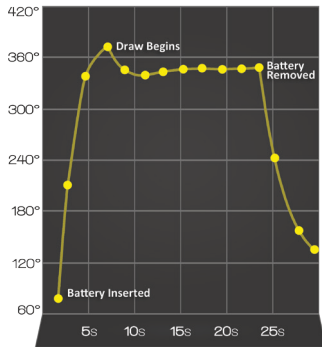
Proper grind and fill level

Fill Level - Fill your trench to the inner side rails (do not fill the entire chamber) even though this might be more than you would normally need. The instant-on and instant-off heating means that you can control the dosage via the heat and draw time. Remove the battery when you are done taking a draw and the rest of the un-vaped material can simply be stored in the Box for later use (even hours or days later). Vaporization occurs best when the herbs sit loosely; do not use your fingers to pack herbs into the trench.

The Launch Box must always remain level during vaporization. Holding the Box at an angle can result in uneven heating. Material that is not in direct contact with the screen will not reach optimal vaporization temperature.

We recommend that Box users first learn how to control the temperature in the Box by controlling their draw rate, and then work to take fewer, much longer and deeper draws. With practice, you will find that filling the lungs thoroughly and completely in one draw is far more powerful and effective than taking the same exact volume of vapor in multiple smaller draws. Depending on your lung capacity, with most Boxes a good draw will last 10 to 15 seconds. However, be sure to have completely mastered temperature control before attempting to increase your draw time -- otherwise you will find yourself coughing.

THE LONG SLOW DRAW



Rating: **EASY**

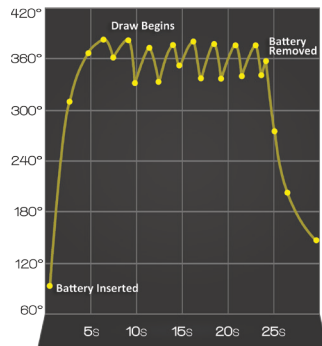
ABOUT THIS METHOD

- Easiest method to master, best for users beginning with the Box.
- Can produce little to no visible vapor.
- Able to maintain even temperature of vaporization given a constant draw rate.
- Less risk of combustion.
- More pronounced taste of herbal material (higher temperatures can cause harsher or “cooked” taste).

1. Push the battery in and hold until you start to see vapor form (3-5 seconds).
2. Without releasing the battery, hold level and draw a long, slow, continuous stream of vapor. Use the heat of the vapor stream on your tongue to adjust your draw speed. It should be warm without irritating your throat and should be fast enough to prevent vapor from building up in the chamber. Ideally, vapor is inhaled as it forms.
NOTE: If your draw is too fast, the screen cannot reach proper vaporization temperature and vapor will not form. With practice you will find your ideal draw speed.
3. Continue inhaling until you have reached 80% of your lung capacity (usually about ten seconds after your draw begins), then disengage the battery.
4. Continue to draw for a few more seconds at a slightly faster rate to capture all remaining vapor still being formed in the Box.
5. Hold the vapor in your lungs for at least 3 seconds, then exhale.

Proceed to **“turn, tumble & tap”** your Box as discussed on page 17.

THE SIPPING METHOD



Rating: **ADVANCED**

ABOUT THIS METHOD

- Recommended for experienced users.
- Produces more visible vapor on exhale.
- Able to reach a broader range of temperatures in one draw.
- Potential for harsher taste due to higher temperatures.
- Much higher risk of combustion.
- Also called the “Micro-Hitting Method”.

1. Push the battery in and hold until you start to see vapor form (3-5 seconds).
2. Without releasing the battery, hold the Box level and sip the vapor from the trench. The sipping action should be very brief, as just to capture the vapor currently formed within the trench (no more than one second).
3. After your first sip, let more vapor form in the trench, then sip again.
4. You can repeat this process 5-10 times, each time reducing the gap between sips (the Box will continue to get hotter between each sip).
NOTE: To avoid combustion, pay close attention to the temperature of the vapor stream, sipping more frequently or for a longer duration can cool the screen.
5. Continue the sipping method until you have reached 80% of your lung capacity (usually about ten seconds after your draw begins), then remove the battery.
6. Hold the vapor in your lungs for at least 3 seconds, then exhale.

Proceed to **“turn, tumble & tap”** your Box as discussed on page 17.

TUMBLING YOUR LOAD

We recommend the “turn, tumble, & tap” method for even vaporization.

For even vaporization, it is important to tumble your load in between draws. You only need to shake the Box enough so that the load comes free from the trench. After releasing your battery **turn** your Box upside down and tap on your hand to dislodge the load, then **tumble** the load by shaking your Box with a side to side motion, lastly, **tap** the sides of the Box to settle your herbs back into the trench.

In addition, even vaporization relies on correct draw rate and whether or not you are tumbling your herbs. If your herbs have turned a uniform brown color by the completion of your trench, congratulations, you nailed it! If your herbs have turned black it means that the screen has gotten too hot or that your load has not been tumbled properly between draws. It can also indicate that you have combusted your herbs (see [Combustion](#) on p.26 for more info).

FINISHING YOUR TRENCH



Additionally, some users choose to use taste to determine when their trench is finished. A popcorn-like taste has often been noted as a good indicator.

In order to avoid unnecessary buildup and clogging in your trench, it is imperative that you brush out your screen after each completed load.

1. With the cover open, turn the Box over and dump whatever material is left after your last vaping session (the Already Been Vaped, or ‘ABV’).
2. Clean gently with the included brush.
3. Blow against screen to remove any remaining dust (with eyes closed).

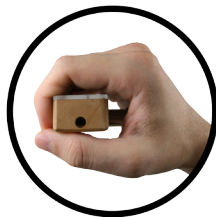


BECOMING AN EXPERT

launch box theory & physics

EXPERT PROTIPS

- The stealthiest way to use the Box is with the battery touching the palm of your right hand with your fingers wrapped over the top. Squeeze your hand to engage the battery.
- Place the battery cap on the negative end of the battery you're using. This makes the battery more comfortable to push in, and the battery cap is handy when you're ready to recap the battery after use.
- Many expert users recommend saving vaporized material (the 'ABV') for culinary use at a later date.
- If experiencing throat irritation or coughing, try curving your tongue up to interrupt the vapor stream. This prevents the vapor from travelling directly to the back of the throat.



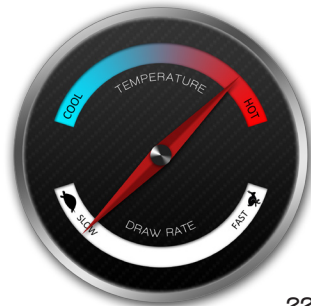
The stealthiest way to use your Launch Box.

DRAW RATE VS TEMP

The relationship between your draw rate and the temperature of the trench is inversely proportional. When your draw rate increases, the trench cools due to more airflow passing over the screen. Inversely, when your draw rate slows or ceases completely, the trench temperature increases, as long as the battery remains engaged. A perfect draw is achieved once balancing the draw rate and trench temperature becomes second nature.

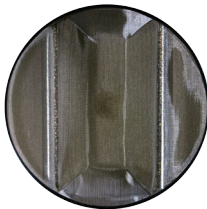
Remember:

The slower the kiss, the hotter the Box.

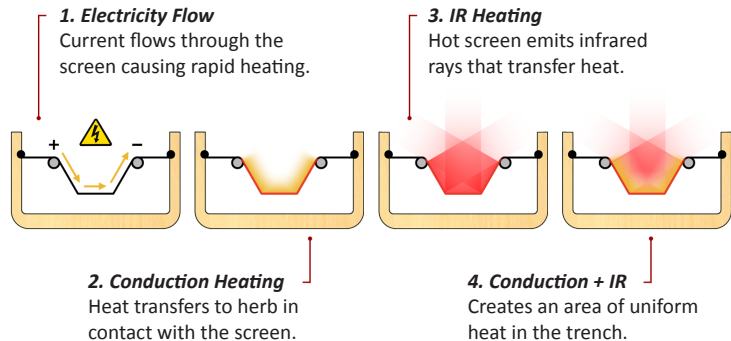


HOW THE BOX WORKS

When the battery is engaged, the current races across the screen causing it to heat rapidly. The hot screen transfers heat to the herbal material in contact with it, a process known as conduction heating. The Box also makes use of Infrared heating (IR), which radiates outward from each surface of the trench forming a zone of criticality in the middle of your herbs. IR effects play a significant part in the overall effectiveness of the design, at least 25% in regards to the heating, and more than 75% in terms of the temperature stabilization. While it is not the majority effect for the heating, it is very important for the overall function and makes more than a noticeable difference in the overall utility of the device. If the Box depended only on conduction characteristics, it would be unusable.



A close-up of the Launch Box screen (looking down).



ODOR & EFFICIENCY

The Launch Box is designed to be an extremely efficient and stealthy vaporizer. In its highest ideal, use of the Box will produce only as much vapor as the lungs are likely to naturally take. If excess vapor is exhaled it indicates that it was not fully ingested by the body. Many vaporizers are designed to impress by producing a significant excess of vapor. This is wasteful and can also lead to additional smell.

Unlikely as it may seem, it *is* possible to get full medicinal effects from your herbs with nearly zero resulting visible vapor or smell. The Box has the unique advantage of being both more efficient in delivery as well as more discreet (stealthy). With proper use it can extend the life of your herbs up to 4X as long. With optimal draw technique, all inhaled vapor is adsorbed vapor. This offers the benefit of allowing you to go undetected *wherever* you so desire.

COMBUSTION



Combustion is what happens when your herbal material reaches 451°F (233°C) and ignites. Under normal conditions, the Box functions between 329°F (165°C) and 410°F (210°C), centering at about 392°F (200°C). Combustion normally occurs when the user waits too long before drawing, or draws too slowly.

If your herb combusts, the vapor will taste extremely harsh and smoky. You may also be able to see a “cherry” of smoldering herbs inside the trench. Combustion results in a grey and powdery ash. Combustion WILL leave a discoloration on your screen, but as long as it doesn’t happen frequently, it will not cause functional damage to your Box. The discoloration will fade with time, but will not go away completely. A burnt taste may also linger in your Box, but this will disappear with continued use. We recommend that you perform a deep cleaning after combustion occurs. See **In Depth Cleaning** on p.30.



TUNING YOUR ENGINE

launch box care and maintenance

BASIC CLEANING

The screen tends to not clog because it is not acting as a condensation surface. In fact, it is a significant aspect of the Box design to avoid the possibility of condensation. Due to the inherent distribution of heat, the screen is unlikely to clog because it is never colder than the loaded material, even after months of usage. Naturally, this makes maintaining the Box easier. As long as the Box is brushed between trenches and your herbs are bone dry, it should not require more in depth cleaning.

1. After each trench, with the cover open, turn the Box over and dump whatever material is left after your last vaping session (the 'ABV').
2. Brush gently.
3. Blow against the screen with eyes closed to remove any remaining dust. (Usually one sharp breath is enough to clear everything.)

IN-DEPTH CLEANING

The screen naturally discolors after use. This is normal and does not require that you clean it; in fact cleaning will not remove the discoloration.

If you feel the need to clean the screen beyond normal brushing, dip your brush or a Q-tip in 99% Isopropyl Alcohol (ISO) and gently rub it on the screen. Take care not to use too much ISO or it will drip through the screen and make the Box taste unpleasant for a couple of trenches. (The taste will go away with use.) To minimize this risk, you can hold the Box upside down while you clean. Please visit our youtube channel (mflb.it/youtube) for more in depth cleaning instructions.

FOR MORE INFORMATION

[MFLB.IT/CLEANING](https://mflb.it/cleaning)



MAYDAY! MAYDAY!

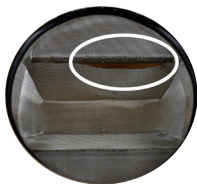
diagnostics and troubleshooting

COMMON ISSUES

1. Screen damage. This normally happens by applying too much pressure when brushing, cleaning, or packing the trench. This type of damage is not repairable and will require warranty service.

2. Drawing too hard. The extra airflow cools the screen down and prevents the Box from reaching ideal vaporization temperatures. **See diagram on p.13 & 22.**

3. Damaged batteries. All rechargeable batteries have a finite lifespan. Your batteries should provide 500 usage cycles (about 6-12 months under normal conditions) before they no longer hold a charge. The stock charger charges the batteries in about 2-4 hours. You will want to take them out of the charger within 12 hours and put the black protective caps on the positive ends to prevent them from shorting on



A screen tear caused by applying too much pressure.

other metal objects. If your batteries have ever become too hot to touch, an “overheating event” has occurred. If this has happened, it means that your batteries will not be able to hold a charge and if left in the charger long enough, can actually cause them to overheat and discharge potassium hydroxide. Skin contact with potassium hydroxide can result in minor itching and irritation, any skin exposed should be washed with water immediately. An overheating event can also occur if your batteries are placed in the charger backwards or if the positive end comes into contact with any other metals (coins, keys, other batteries, etc). ***Please note: if a battery overheats, even once, it may be ruined completely.***

4. Grind consistency. Coarser material does not have enough surface area to vaporize efficiently. By increasing that surface area (grinding finer) your herbs can reach vaporization temperatures more evenly. See **Preparing Your Trench** on p.11, there is also a grind level comparison at the beginning in the **Quick Start Guide.**

LIFETIME WARRANTY

Your Launch Box carries a lifetime functional warranty. We will replace defective or damaged Boxes free of charge, even if the Box was damaged accidentally or through your own stupidity. Your Box MUST have the serial number intact to qualify for warranty service.

The warranty does not cover Boxes that are: lost, stolen, confiscated, willfully destroyed, intentionally damaged, or with no serial number. All accessories are warranted for the first 90 days after purchase. (Proof of purchase is required.) The warranty also does not cover the light inside the trench.

FOR MORE COMPREHENSIVE WARRANTY INFORMATION PLEASE VISIT

MFLB.IT/WARRANTY

WARRANTY PROCESS

For warranty service, fill out our online form at mflb.it/contact, you will be asked to provide the following information:

- Your name, address, phone number, and the best time to reach you.
- The serial number on the back of your Box (along with a photo).
- A brief description of the issue or damage.
- Photos of the damage or reason for your warranty claim.

Our warranty is an exchange process. Once a warranty claim has been approved, we will send out your replacement Box and include instructions for how to return your old Box. We send your new Box prior to receiving your old one as a convenience to you and to keep the time you are without your Box to a minimum. It is also a matter of good faith and trust that you will return your used Box. **Boxes that have been warranted become property of Magic-Flight. Failure to follow the instructions included with your replacement Box could void your warranty.**



GOING FURTHER

resources, products, and more about us

THE FINISHING GRINDER

The Finishing Grinder has been designed specifically for the Launch Box. It fits directly over the bowl and grinds dry herbal material to a fine powder-like consistency for optimum high performance draws. It is the highest quality portable grinder available for the Launch Box. This grinder comes in your choice of Maple, Cherry or Walnut woods.

- Discreet, silent and easy to use.
- Fits in your pocket.
- Prevents material spillage.
- Grinds only as much as you need.

FOR MORE INFORMATION

MFLB.IT/GRINDER



POWER ADAPTER

The Launch Box Power Adapter (PA) works in the place of your battery. It connects your Box to any wall outlet for instant vapor. The PA enabled Box allows the user to have complete authority over all aspects of what is happening in the herb chamber. You can control both the rate and the energy delivered to the herbs and the temperature of the vapor that you receive. The optional car adapter allows you to plug your PA into a cigarette lighter outlet (available for purchase separately).

FOR MORE INFORMATION

MFLB.IT/PA



THE WATER PIPE WHIP

The Magic-Flight Water Pipe Whip (WPW) enables you to use your Launch Box with any glass-on-glass style water pipe. It gives you more freedom and flexibility in getting large, tasty vapor draws. The WPW fits a 14mm downstem, however a glass fitter is available to adapt it to the 18mm size. The WPW disassembles easily for cleaning, and for use as a standalone whip.

Benefits include:

- Cooler vapor.
- Less throat irritation.
- Larger quantity of vapor.

FOR MORE INFORMATION
MFLB.IT/WPW



HERBAL BLENDS

SWEETLY CALMING: *This blend has a gentle, balmy flavor that coaxes the sinuses to clear, making way for subtle aromas that will warm the throat and chest.*

BALANCING BLEUS: *This blend introduces itself with a gentle flavor, then harmonizes with the invigorating tang of eucalyptus.*

REVITALIZING: *The aromas and flavors can help you feel yourself again by calming your nerves.*

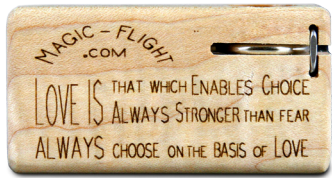
FEELIN' FINE: *This blend encourages your being to revive. Peppermint prepares your senses for the rich flavors of Lavender and Lemon Balm.*

Crafted by Vaporbrothers, these custom recipes are designed to heighten your enjoyment of the MFLB.

FOR MORE INFORMATION
MFLB.IT/HERBAL



THE APHORISM



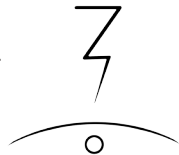
The aphorism describes an insight into the ultimate nature of love. When applied and practiced on a continuing basis, it is a complete key to realizing high quality relationships and deep interrelatedness. We believe this to be the next 'right step' in the evolution of human community.

The aphorism is a tool: Are we giving and receiving love appropriately? When we truly love, we are enabling the highest values and dreams of all those that we interact with (their dreams, not our dreams for them). We at Magic-Flight use this aphorism every day in the running of our company with great results! Its consistent utilization benefits all kinds of relationships, every moment of every day.

THE GLYPH

The Magic-Flight glyph combines several visual ideas:

- a stylized M and F (relates to our company name).
- a graphic representation of vapor emerging from the Box (the crescent representing the screen or trench, the circle representing the draw hole, and the squiggle being the vapor).
- a sun and planetary body with a spaceship.
- the Ankh (a symbol from Egyptian mysticism).
- images representative of a man or woman with arms raised.
- a lightning strike (power).
- the natural sun and moon and:
 - a pyramid.
 - a gnomonic rod (ancient surveying instrument).
 - a road to the horizon.



The Magic-Flight Glyph.

RESOURCES

The Magic-Flight Website has extensive FAQs, instructional videos, photos, instruction manuals, and links to help you go further with your Box. We recommend all Launch Box users peruse the FAQs. magic-flight.com

Vaporpedia is the most comprehensive FAQ on the Launch Box available. It has extensive information on the Box and accessories including design, function, batteries, chargers, technique, history and more. Chances are, the answer to your question can be found on Vaporpedia. mflb.it/vaporpedia

Forums: FuckCombustion.com (FC) and The MFLB SubReddit are two of the largest forums in the world for MFLB owners. They both have ongoing discussions of techniques, tips, tricks, opinions and personal preferences for the Launch Box.
FuckCombustion: mflb.it/fc *MFLB SubReddit:* reddit.com/r/mflb

CONNECT WITH US



Facebook
[facebook.com/
magicflight](https://facebook.com/magicflight)



Twitter
[@magicflight](https://twitter.com/magicflight)



Tumblr
tumblr.com/mflb



Instagram
[@magicflightlaunchbox](https://instagram.com/magicflightlaunchbox)



Youtube
[youtube.com/
magicflightvaporizer](https://youtube.com/magicflightvaporizer)



Blog
blog.magic-flight.com

This Box has passed through many hands to arrive in yours.



HAND MADE WITH LOVE IN THE USA.